

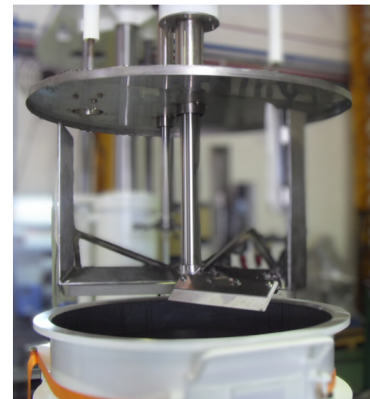
Butterfly Twin Mixer (MB)

High-Viscosity Mixing: Dual-Shaft, High-Powered, Efficient Mixer

The Butterfly Twin Mixer (MB-series), with its powerful dual-shaft design, is ideally engineered for high viscosity mixing up to 500,000 cps. Integrated with dispersing or emulsifying functions, it comfortably manages batch sizes up to 5000L. Engineered with precision shaft-to-bearing alignment from high-quality steel, it ensures reliable performance, efficient processing, durability, and minimized downtime.

This mixer not only delivers high-powered performance but also emphasizes energy optimization, promoting low energy consumption for economical operations. Its user-friendly interface facilitates simple operation and requires minimal maintenance.

Equipped with a stainless steel jacketed tank and a pocketless valve, the Butterfly Twin Mixer meets high hygiene standards and simplifies cleaning. These features position it as a comprehensive solution for industrial mixing requirements, merging power, efficiency, and hygiene.



Dual-Shaft Mixer

Designed for high viscosity mixing up to 500,000 cps.



High-Powered

Offers high-powered performance for demanding mixing tasks.



Large Batch Sizes

Suitable for batch sizes up to 5000L.



Hygienic Design

Stainless Steel Tank & Pocketless Valve for Easy Cleaning.



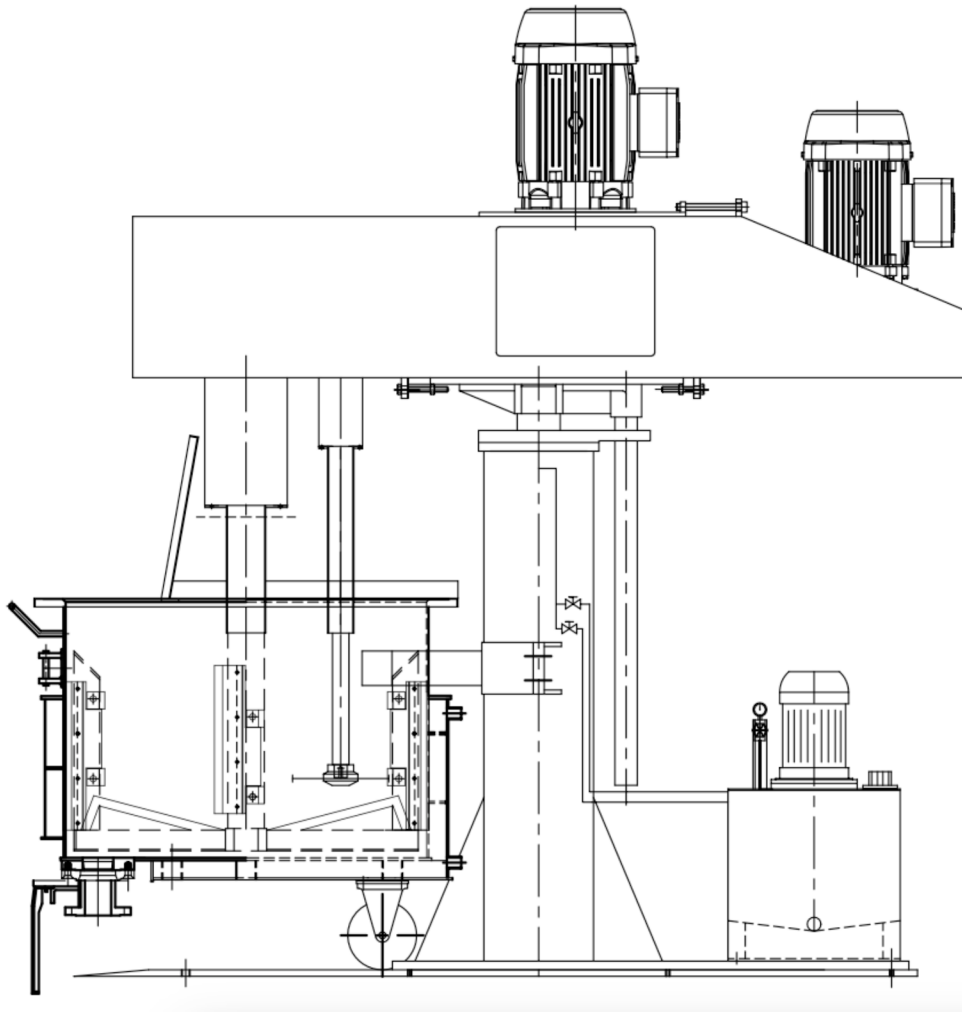
Durable

Built for longevity and minimal downtime. High quality steel



Energy-Optimized

Low energy consumption for cost-effective operation



SCADA + HMI Control & Monitoring Option



Hygienic Design Option



Hazardous Environment Option

Model	Motor HS Shaft (kW)	Motor LS Shaft (kW)	Stroke (mm)	Rotating Speed HS Shaft (rpm)	Rotating Speed LS Shaft (rpm)	Mixing Cap (l)	HS Impeller (mm)	Weight (kg)
MB-10/5	3.7	7.5	500	1200	0-380	80	150 (6)	1400
MB-15/7.5	5.5	11	600	1200	0-290	150	200 (8)	1700
MB-20/10	7.5	15	700	1200	0-250	250	230 (9)	1800
MB-30/15	11	22	1100	1200/800	0-200	500	280 (11)	2200



Cyclelect Nismix Pte. Ltd.

515 Yishun Industrial Park A, Singapore 768737
 T: +65 6868 6000 • E: hello@nismix.com.sg
 W: nismix.com.sg

70+ years of industrial powder and liquid mixer solutions, from concept to integration, empowering production plant owners.

